



User-defined rules



Automated reporting and metrics



Ongoing data-quality monitoring and metrics

Pervasive® Data Profiler™

Proactively audit data compliance and ensure data quality

Pervasive Data Profiler helps you ensure data quality by eliminating the complexity, risk, and expense associated with manually checking data. Versatile and easy to use, it enables you to proactively audit all types of data and automate testing against ever-changing business needs and compliance regulations. You can assess data across multiple data platforms and quarantine questionable data until it can be cleansed, reducing later rework. Pervasive Data Profiler is ideal for testing large amounts of transactional data, allowing organizations to improve internal controls, increase IT productivity, avoid costly rework, and increase ROI around applications and business processes.

The Challenge of Data Compliance, Auditing, and Quality

In today's complicated IT environments, the ability to accurately measure and validate data quality is a major factor in uncommon business success, according to Aberdeen Group.* Unfortunately, many IT departments cannot support their company's data-quality efforts without a high drain on resources. When it comes to transactional data assurance, many IT departments rely on SQL queries or manual checking—a tedious process that is error-prone, time-consuming, labor-intensive, and costly, especially when data is processed from a variety of sources.

There is a better way. Pervasive Data Profiler is fast and easy to deploy, and has an engine specifically designed for testing/auditing large amounts of transactional data, creating positive effects on business processes, reducing expenses, and lessening risk to IT departments and their companies. Pervasive Data Profiler's highly scalable, data-intensive throughput is built on the Pervasive DataRush™ technology, designed to scale automatically to deliver parallel data processing on multicore servers.

Many of our customers, including IT departments, high-volume transactional data hubs, and accounting firms and larger corporate accounting departments, have discovered Pervasive Data Profiler to be highly reliable and cost effective. Customers find that Pervasive Data Profiler brings better business performance and regulatory compliance support to meet their needs.

Pervasive Data Profiler can help companies assess data quality and meet compliance needs across many areas:

- Customer and transactional data
- Claims processing
- HIPAA and NPI compliance
- The Patriot Act
- Sarbanes-Oxley
- Fair-lending policies
- Anti-money laundering directives
- Identity theft protection
- And many internal management directives

Fast, Accurate Automated Data Auditing and Analysis

Pervasive Data Profiler provides a proven way to rapidly deploy assessment projects, and proactively audit data before loading, during loading, or afterwards. It can assess data across multiple databases and files, providing objective and actionable results. By applying multiple tests to large amounts of data, it provides detailed results on which data passed, which data failed, and why it failed. It analyzes each data set, then generates detailed reports showing audit results.

Connectivity is provided for many data types, including major databases, flat files, and legacy files. A versatile join function can be used to join multiple heterogeneous files in a single run.

The result? You get an accurate assessment of data quality that enables you to meet application needs, and IT requirements.



PERVASIVE

Data Profiler™

Eliminate Risks and Costs

- ▶ Low TCO with results in minutes or hours, not days
- ▶ Reduced training costs and learning curves
- ▶ Elimination of costly network with upfront analysis
- ▶ Perfect fit for ETL and data quality projects

SPECIFICATIONS:

- ▶ **Analyst Workstation**
Windows® 2000, 2003, XP, Vista
- ▶ **Profiler Server**
Windows 2003, XP, Vista,
Red Hat® Linux, SUSE® Linux, AIX

"Data profiling has emerged as a critical technical component supporting line of business requirements for data integration, data quality, and data governance. Pervasive's ability to provide a data profiling product that is easy to use and integrate into a business environment while providing scalable high performance is truly welcome in the data management market.

— David Loshin, President, Knowledge Integrity, Inc.

"The nature of our mortgage analysis business requires us to meet stringent data quality standards. In addition, because we receive data from hundreds of disparate data sources and have hundreds of millions of records to maintain, we needed a profiling tool with robust functionality capable of immense speed and scalability. We were happy to be one of the first beta customers for Pervasive Data Profiler 4. Having run it through the rigors of our data analysis process, we believe it will be an integral part of our success in managing our data content and data quality."

— Carlos Santiago, Vice President of Data Content, Loan Performance

*Aberdeen Group — Customer Intelligence Benchmark Series: Customer Data Management: How Leaders Attain Tangible ROI, June 2006.

Simple and Versatile

The easy-to-use AutoGen feature delivers automatic, one-step generation of a variety of standard metrics. Additional testing metrics can be easily added without limitation.

This ease of use helps ensure fast implementation with low learning curves. In many cases, users can audit data with limited or no assistance from the IT department.

Powerful Reporting, Fast Analysis

Pervasive Data Profiler delivers actionable, at-a-glance charts backed by drill-down analysis with percentages

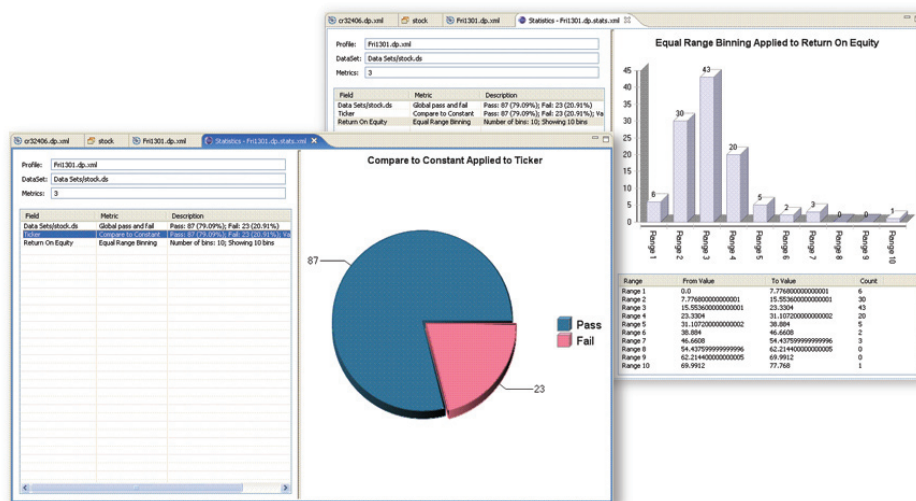
of success rate and specific counts. This information enables you to make faster, more accurate decisions.

Parallel execution with automatic scaling across multiple cores delivers lightning-fast processing of large data sets with complex rule analysis.

- 3-D color pie and bar charts
- Ability to drill down on data within charts
- Versatile presentation formats: PDF, HTML and CSV
- Detailed view of Pass and Fail files for downstream processing
- Equal range binning
- Statistical metrics such as mode, median, standard deviation and variance

Benefits

- Proactive data auditing
- Data compliance with 100% testing of data
- Immediate ROI with affordable price point and out-of-the-box usability
- Ability to test ever-changing compliance requirements
- Testing and validation of data across multiple platforms
- Automated data testing



About Pervasive Software

Pervasive Software provides agile data integration software that speeds the flow of data between applications and between organizations. Our robust technology addresses SaaS, SOA and traditional integration modes and allows customers to re-use the same software for integration scenarios that span data warehouses, real-time application integration and data exchange with trading partners.

Contact Us

www.pervasive.com
1-800-287-4383 (North America)
1-512-231-6000 (Main Office)
+32-22-90-53-91 (Europe)

For other international contacts, please visit www.pervasive.com/company/contact/index.asp